



# SSE

*Guaranteed System Excellence*

100 01 001 11010

[www.sse.co.za](http://www.sse.co.za)

**IT**<sub>4</sub> **INDUSTRY**

# Company Profile



31 Kersieboom Crescent  
Swartkops Ext 4  
Centurion  
South Africa

P O Box 7170  
Centurion  
0046  
South Africa

Tel: +27 12 663 4331  
Fax: +27 12 663 4335

---

**QUALITY  
MANAGEMENT**  
Certificate

Voluntary participation in regular  
monitoring according to ISO 9001:2000

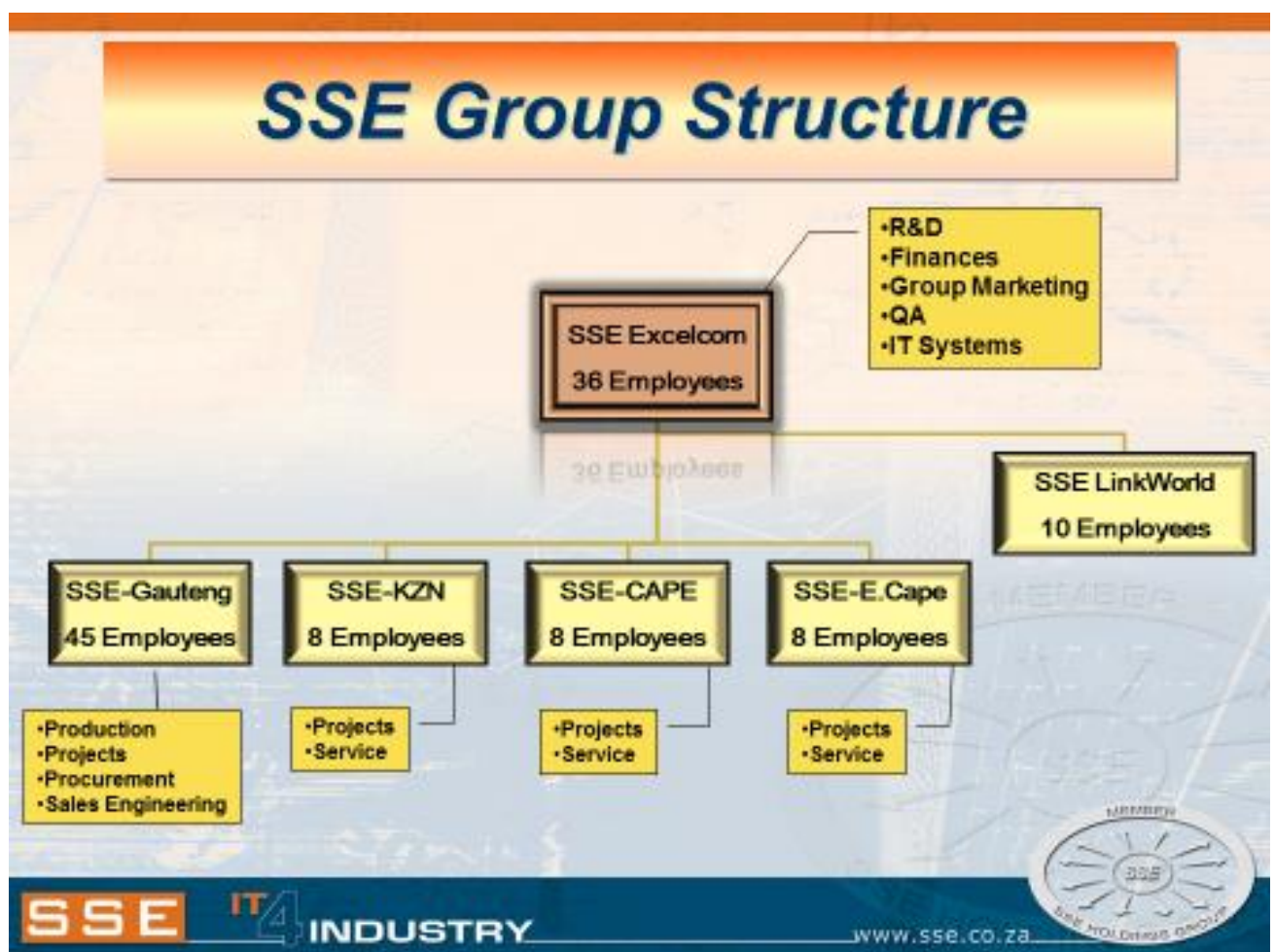
---



## The COMPANY

SSE was formed in 1994. Although SSE is more than **21 years** in business, most of the core developers and management has been actively involved in the Telemetry, Tele-control, Automation and Wireless Data Communication networks and industries close to 30 years. Most of SSE engineers were born and bred in the military industry, well suited to develop highly reliable systems. Telemetry is by far the SSE focus over the 21 years. SSE has established a market of over **65%** of the telemetry market in the Water and Waste Water Telemetry market in Southern Africa. SSE has over **25 000** SSE-RTU installations currently operational

The company expanded over the years with different business units established in different areas and different functionalities. SSE was established 21 years ago as to co-ordinate and centralise group activities. The SSE group consist of the following strategically placed business units:



### SSE Holistic Solution Approach

The group is an engineering solution provider that specializes in building turnkey systems using a holistic approach. We are committed to the development, supply and implementation of high quality systems.

The Groups success lies in the fact that it not only focuses on the initial design and construction phase of a system, but ensures that the client has the maximum system availability through its service level agreements and high level of continuous support and upgrading throughout the system life cycle. Thus, continuous support and rapid response times throughout the life cycle of a system is of utmost importance.

To be able to comply with our promise, Strategically Business Units were established throughout South Africa.

**SSE-Gauteng:**

SSE Gauteng is the oldest branch in the group and started in 1994 and based in Pretoria. A number of critical functions such as the R&D and manufacturing departments are situated in SSE Gauteng.

SSE-Gauteng covers the Old Transvaal, Freestate, and the rest of Africa.

**SSE-Cape:**

SSE-Cape was formed in 2000 and is based in Cape Town. SSE Cape is tasked region to cover is the Western Cape Province and Namibia.

SSE-Cape focuses as a total solutions provider in its area and represents SSE's services and products. SSE-Cape is also the sole provider of the SSE professional services and product lines in Western Cape and Namibia.

**SSE-KZN:**

SSE-KZN was established in 2007 and based in Durban. SSE-KZN is tasked with the responsibility of Kwazulu Natal Province.

SSE-KZN focuses as a total solutions provider in its area and represents SSE's services and products. SSE-KZN is also the sole provider of the SSE professional services and product lines in KZN.

**SSE-EC:**

SSE-EC was established in 2007 and based in Port Elizabeth. SSE-EC is tasked with the responsibility of the complete Eastern Cape Province.

SSE-EC focuses as a total solutions provider in its area and represents SSE's services and products. SSE-EC is also the sole provider of the SSE professional services and product lines in the Eastern Cape.

**SSE-Excelcom:**

SSE-Excelcom is the BBBEE (Broad Based Black Economic Empower) partner in the Group of companies with a 55% shareholding by BEE people.

**SSE-LinkWorld :**

SSE-Linkworld is the company in the group focusing on the importing and exporting of goods all over the world. SSE-LinkWorld is in a continues process of Service improvement and Product offering expansion. The SSE-linkworld offering is focusing on the communications industry of which some areas are:

1. Consultation to the communication industry in the Southern parts of Africa.



2. Import and Export to Africa of RF Cables, Connects, GSM (CellPhone) repeaters, Antenna Systems, Duplexers, etc.

SSE-Linkworld import these products from different parts of the world and distribute all over Africa and the Middle East.

All group importing requirements is done by SSE-LinkWorld.

### **Industries includes**

The group does complete turnkey solutions for different sizes of projects.

The Groups main focus is on the following industries:

- Design, Supply, Install & maintenance of Telemetry Systems and Automation Systems for water pumping and waste water pumping networks.
- Design, Supply, Install & maintenance of control network for pumping schemes, irrigation schemes, humidity, temperature and other monitoring and control systems for the Agricultural Industry.
- Design, Supply, Install & maintenance of Telemetry Systems for Electrical distribution networks, including Sub-Station design and supply.
- Advanced Voice and Data Communication Networks in the two way radio, Trunking and Cell Phone Industries. This is more the focus of LinkWorld.
- Design, Supply, & Install & maintenance of automated control and monitoring systems using PLC's from Schneider, Allan Bradley, etc..
- Design, Supply, Install & Maintenance of advanced Tele-Control systems using SSE-RTU's
- Design, Supply, Engineer & Install SCADA Systems using Adroit, Citect, RS View, etc.
- Design, Supply, & Install Turnkey Radio Communication Networks.
- Design, Supply, & Install of high speed industrial communication networks using Ethernet, Fibre and Microwave Data Links.

### **About the Group**

The group strictly follows ISO 9001:2000 standards specialising in the design, manufacturing and installation of the most powerful solution, as listed above, in Southern Africa.

The Groups Telemetry Systems, Solutions and Products have become the market leader in Southern Africa and other parts of the world. Our Telemetry and other Systems compare extremely well to other Systems worldwide. SSE as a company, as well as our existing client base have the utmost confidence in its products and services. This leaves us with the confidence not only to market our product locally but also in other parts of the world.

### **CIDB**

SSE-Excelcom is registered at the CIDB board for both 7EP as well as 4CE. Excelcom thus comply too all standards as specified by the CIDB board.

### **Hi-Tech Background**

All companies in the group were born and bred in developing hi-tech systems for the military and aerospace industries in Southern Africa. With this hi-tech knowledge and experience, SSE industrialised their military systems and work methodologies to ensure deliver we deliver top quality products and services.

### **Rugged Reliability**

From paper design, (hard copy as well as CAD) to component selection, design qualification to manufacturing process specification, the products are carefully crafted to withstand the rigours of harsh environments.

New product designs benefit from the MIL-SPEC design and qualifications procedures adopted over the years, and are subjected to a comprehensive MIL-SPEC qualification test process including:

- Exhaustive compatibility testing,
- Testing for EMI Interference,
- High/low temperature operation,
- Shock and vibration testing and
- Beta field testing in typical customer applications.

This has been proven over and over as a success recipe to ensure that only the highest level

### **Distributed System Integration**

The group strongly believes in establishing engineering and support offices as close as possible to our Customers, therefore, there is the continuous process of appointing technically capable System Integrators (SI's), in South Africa, Southern Africa and other parts of the World.

Because of the rapid expansion into the Southern African market, the company realised that effective support systems were crucial. As a solution, the group appointed handpicked Systems Integrators all over Southern Africa, and consequently support structures have been very successfully implemented. By doing this, the company have well trained people supporting the System as close to the client as possible.

The company further strategically placed offices in Pretoria, Cape Town, PE and Durban.

### **What about the future?**

Although the Groups Products, Services and Systems are of world class standards, we have also managed to keep the cost of the product at an affordable rate.

The company strongly believes in continued expansion and upgrading of its Products and Service delivery, not only to keep up with technology, but mainly to keep abreast of client needs. The company strongly believes in continued Research and Development of new functionality and products. It is of such importance to us that the group invests 10% of its turnover into Research and Development.

### **Vision Statement**

To be the Ultimate System solution provider and market leader through the following:

- To ALWAYS provide Products that will completely fulfill and exceed our clients needs.
- To be the ultimate leader in all aspects in our industry, by using cutting edge technology to deliver the ultimate solutions.
- To design, manufacture, supply and install Products and Systems of extreme quality that exceed client expectations.
- To employ and maintain highly motivated employees, which is proactive, responsive, accountable, responsible, friendly, productive and willing to excel and grow.
- Not only to be the ultimate market leader and the dominant supplier of the local market, but to enter, expand and excel in the foreign market.
- For the company to grow and excel not only in numbers, but also in character, in quality, in image, in commitment and in total client satisfaction.
- To be a proud and successful contributor to the South African environment and the upliftment of its people.
- Building lasting relationships with **ALL** of our Clients.

### **Mission Statement**

To connect people in business and industry, to real-time information, using the ultimate in cutting edge technology, in ways that enable businesses to make informed decisions, to ultimately improve service, profitability and quality of life for all.

**Typical Applications include**

**Water & Sewage Plants & Networks**



**Electrical Reticulation Systems**



**Flood Warning and Mitigation Systems**



**The Mining Industry**



**Irrigation Systems**



**Traffic Monitor & Control Systems**



**Gas Plants & Networks**



**Industrial Plant Monitoring & Control**



**Building Management**



**Any Other Monitoring Application**





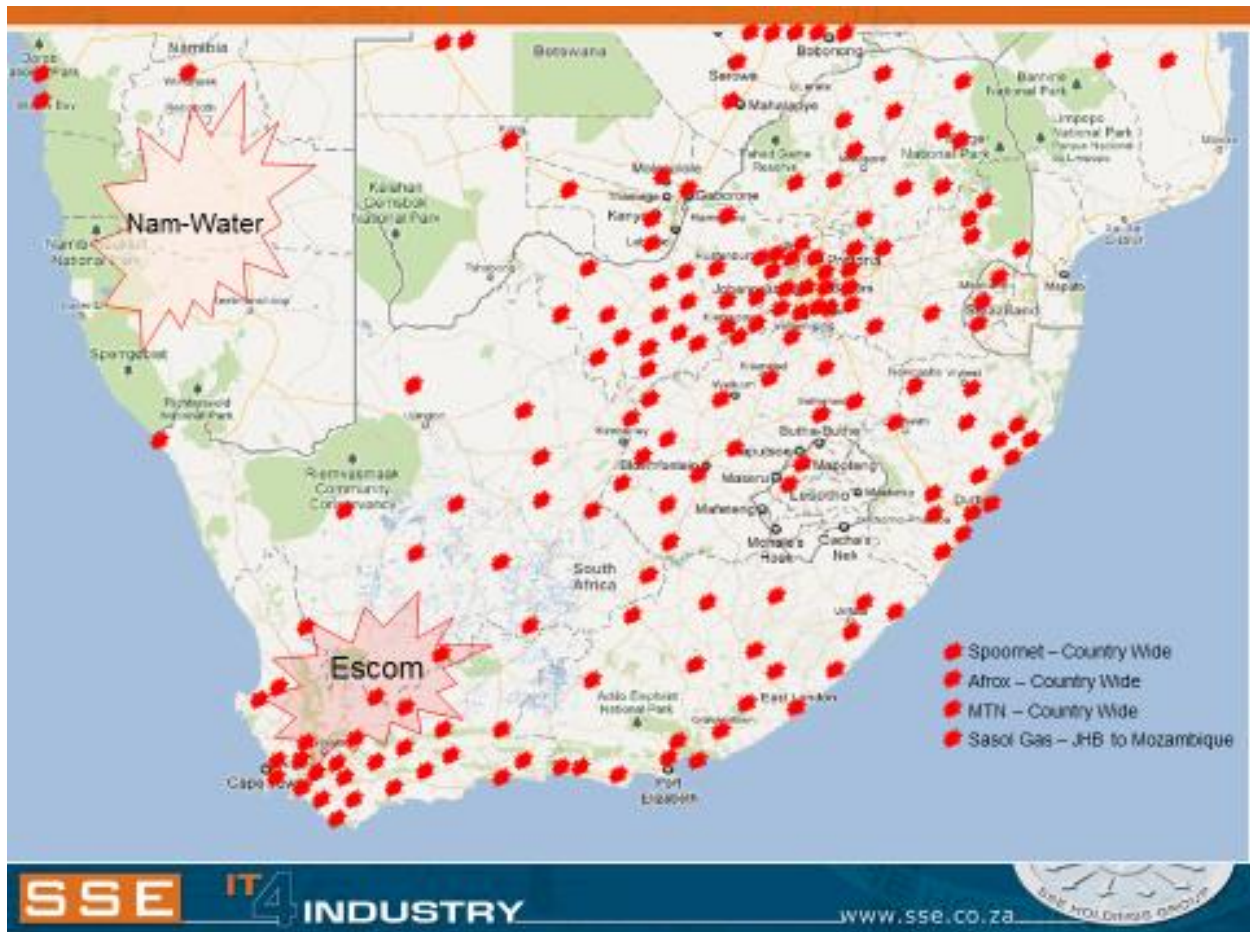
The existing customer list includes, amongst others:

Cape Town Metro  
ESKOM  
Dept of Water Affairs(Various Installations)  
Johannesburg Water (Existing R 50 Million Contract  
Kalahari East & West Water Schemes  
Tshwane Metro (Pta) - Traffic  
Tshwane Metro (Pta) – Flood Warning System  
Amatola Water  
Kumba Iron Ore (Existing R 25 Million project)  
Botswana – Water Utilities  
Sasol  
City of Cape Town  
EThekweni Metro.  
UGU Water  
NamWater ( The whole country)  
Botswana Dept Water Affairs

De Beers Mining  
City Councils  
Klerksdorp Water  
Johannesburg City Power  
Anglo American  
Tshwane (Pta) – Water (R65 Million)  
Exxaro  
Potchefstroom Water  
  
uMhlathuze Water  
ACSA  
Nelson Mandela Metro.  
uMthlatuze Metro.  
Impala Platinum  
Windhoek Municipality.  
Gaborone.

and many many others.

This Displays some of the 25 000 installations done all over Southern Africa



## QUALITY POLICY STATEMENT

The SSE holdings Group is committed to a policy of conformance to requirements for each function of the organisation and for customer satisfaction, or we will change the requirements to what our customers really need.

Implementation of this policy makes it essential that each person be committed to performance exactly as is required.

It is our basic operating philosophy, to concentrate on prevention methods, to make quality a way of life, and perpetuate an attitude of **“Do it right the first time”**.

The Company wide emphasis on defect prevention, serves as a base for continual review and planning that utilises current and past experience to keep the past from repeating itself.

Procedures, products and systems are qualified and proven, prior to implementation and then continually examined and officially modified, when an opportunity for improvement is seen.

The quality function reports on the same level as those functions that are being measured and has complete freedom of activity.

The SSE Group complies with all the requirements of ISO 9001: 2000 with the exception of Requirement 7.5.4: Customer Property.



30 September 2015

---

**GERT BEZUIDENHOUT**  
Group CEO

---

**Date**

---

**QUALITY  
MANAGEMENT**  
Certificate

Voluntary participation in regular  
monitoring according to ISO 9001:2000

---



## Previous Completed Projects

This is a list of contracts completed during the last three years:

<b>No:</b>	<b>Client</b>	<b>Description</b>	<b>Year</b>
1	Amatola Water	Water Management & Control System	2001
2	Gaborone Notswana	Water Management & Control System	2001
3	Overberg Water	Water Management & Control System	2001
4	East London Sewage	SCADA System	2001
5	Mosselbay Sewage & Water	SCADA System	2001
6	Helderstroom Prison	Load Management System	2001
7	Stibaai Water	Water Management & Control System	2001
8	Swellendam Water	Water Management & Control System	2001
9	Suurbraak	Water Management & Control System	2001
10	George Water & Sewage	SCADA System	2001
11	DWAF Worcester	Water Management System	2001
12	Hofmyer	Water Management System	2001
13	Helderberg	Security Monitoring System	2001
14	Mosselbay Prison	Load Management	2001
15	Palmiet Dam	Security Monitoring System	2001
16	Porterville	Water Management System	2002
17	Hugenot Tunnel	SCADA Upgrade	2002
18	East London Municipality	Water & Sewage Management System	2002
19	Rondberg Farm	Irrigation System	2002
20	Grootbraak Municipality	Water Management System	2002
21	Pollsmoor Prison	Load Management Systems	2002
22	Airport Company	Building Management	2002
23	Cockscomb	Water Management System	2002
24	Steenberg Golf Course	Security System	2003
25	Daimler Chrysler	Load Management	2003
26	Nelson Mandela Metropolitan	Sewage Management & Control System	2003
27	City of Cape Town	Sewage Management & Control System	2003
28	Stillbaai Municipality	Water Management System	2003
29	De Beers Marine	Raalttime Video Analysis	2003
30	Dwars River Prison	Water Management System	2003
31	Oudshoorn, DWAF	Well field management System	2003
32	Potchefstroom City Council	Water Management System	2006
33	KOSH	Water & Sewage Management System	2003
34	Ritchardbaai	Water & Sewage Management System	2003
35	City of Tygerberg	Electrical	2004
36	ISSI	Digital Radio Network	2004
37	Metro Rail	PLC, RTU and SCADA Oven control	2004
38	Metro Rail	RTU, SCADA controlled train washer	2004
39	Arcacia Park	Electrical Fence Monitoring	2004
40	S`cientific Labs	SCADA & RTU Applications	2004
41	Johannesburg Water	Sewage and Water Management	Till 2013
42	Pretoria Metro	Water Management System	2013
43	Amandelbult Gold Mine	Extreaction Fan Monitoring System	2004
44	Ekurhulenei Metropolitan	Water and Cathodic Protection System	Till 2011

<b>No:</b>	<b>Client</b>	<b>Description</b>	<b>Year</b>
45	Transnet Freght Rail	High site monitoring via GPRS	2009
46	Standerton	Water Management & Control System	2008
47	Lepelle Northrn Water	Water Management & Control System	2010
48	Lebalello Mining	Water Management & Control System	2009
49	ACSA - OR Tambo Airport	Fuel Distribution Management System	2007
50	SASOL	Gas Pipeline SCADA system	2010
51	Ethikweni	Water & Sewage Control System	2010
52	Umthlatuze	Water & Sewage Control System	Till 2012
53	UGU Water	Water & Sewage System	2009
54	Exxara Mining	Various Systems	2010
55	Klerksdorp	Water & Sewage Control System	2001
56	Nelson Mandela Metro (PE)	Sewage Control System	2010
57	Bitou Municipality (Plettenbergbaai)	Water & Sewage Control System	2010
58	JHB City Power	Substation Control system	2008
59	Tswane Metro	Substation Control System	2007
60	Tswane Metro	Flood Warning System	2006
61	Tshwane Metro	Traffic Control System	2008
62	Megalies Water	Water Management & Control System	2009
63	New Coega Harbour - Portnet	Substation Control System	2010
64	Fish Water Flats - PE	Sewage Control System	2010
65	West Coast Water	Water Management & Control System	2010
66	Stellenbosch Water	Water Management & Control System	2009
67	Madibeng Municipality	Water Management & Control System	2009
68	Midvaal Municipality	Water & Sewage Management System	2010
69	PPL	Water Management & Control System	2006
70	Middelburg	Substation Control system	2010
71	Kalahari West Water	Water Management & Control System	2005
72	Bloemwater	Water Management System	2006
73	Christiana Municipality	Water Control System	2004
74	Coligny Municipality	Water Control System	2009
75	Mogale City	Water & Sewage System	2008
76	Afrox	Gas Monitoring System	2007
77	Nam Water Namibia	Water Control System	2009
78	Windhoek Municipality	Water & Sewage System	2009
79	Swakopmund	Water & Sewage System	2006
80	Various Systems in Botswana	Water & Sewage System	Continues
81	Harrismit Municipality	Sewage and Water Management	2005
82	Western Area Municipality	Water Management System	2008
83	Randburg Municipality	Water Control System	2009
84	SA Airforce	Fuel Management System	2008
85	Letabo High Lift Pumpstation	Total automation with VSD.	2009
86	Temba WTW	Pumpstation Automation	2010
87	MIBA Diamond Mine	Total Automation	2010
88	Midvaal	Filter Plant Fuzzy Control	2009
89	Rustenburg Treatment Works	Total Automation of Plant	2010
90	Ugie Water Treatment works	Filter Control	2009
91	Tshwane -Rooiwal	PLC - SCADA total solution	2010
93	Etc		
94	An another 150 systems.....		

## Contact Details:

Head Office:

31 Kersieboom Crescent  
Zwartkop Ext 4  
Centurion  
0157

Tel: 012 663 4331

Fax: 012 663 4335

Gert Bezuidenhout  
Group CEO  
+27 82 573 0706  
[gbez@sse.co.za](mailto:gbez@sse.co.za)

Allan Welfare  
Director SSE-Gauteng  
+27 82 410 4054  
[allanw@sse.co.za](mailto:allanw@sse.co.za)

Carlo Shields  
Director SSE-KZN  
+27 82 828 0822  
[cshields@sse.co.za](mailto:cshields@sse.co.za)

Gary van Boomen  
Director SSE-EC  
+27 82 851 4826  
[gvboomen@sse.co.za](mailto:gvboomen@sse.co.za)

Deon Lerm  
Director SSE-Cape  
+27 84 230 1580  
[dlerm@sse.co.za](mailto:dlerm@sse.co.za)

LinkWorld  
MD SSE-LinkWorld  
+27 82 3899996  
[svermaak@linkworld.co.za](mailto:svermaak@linkworld.co.za)