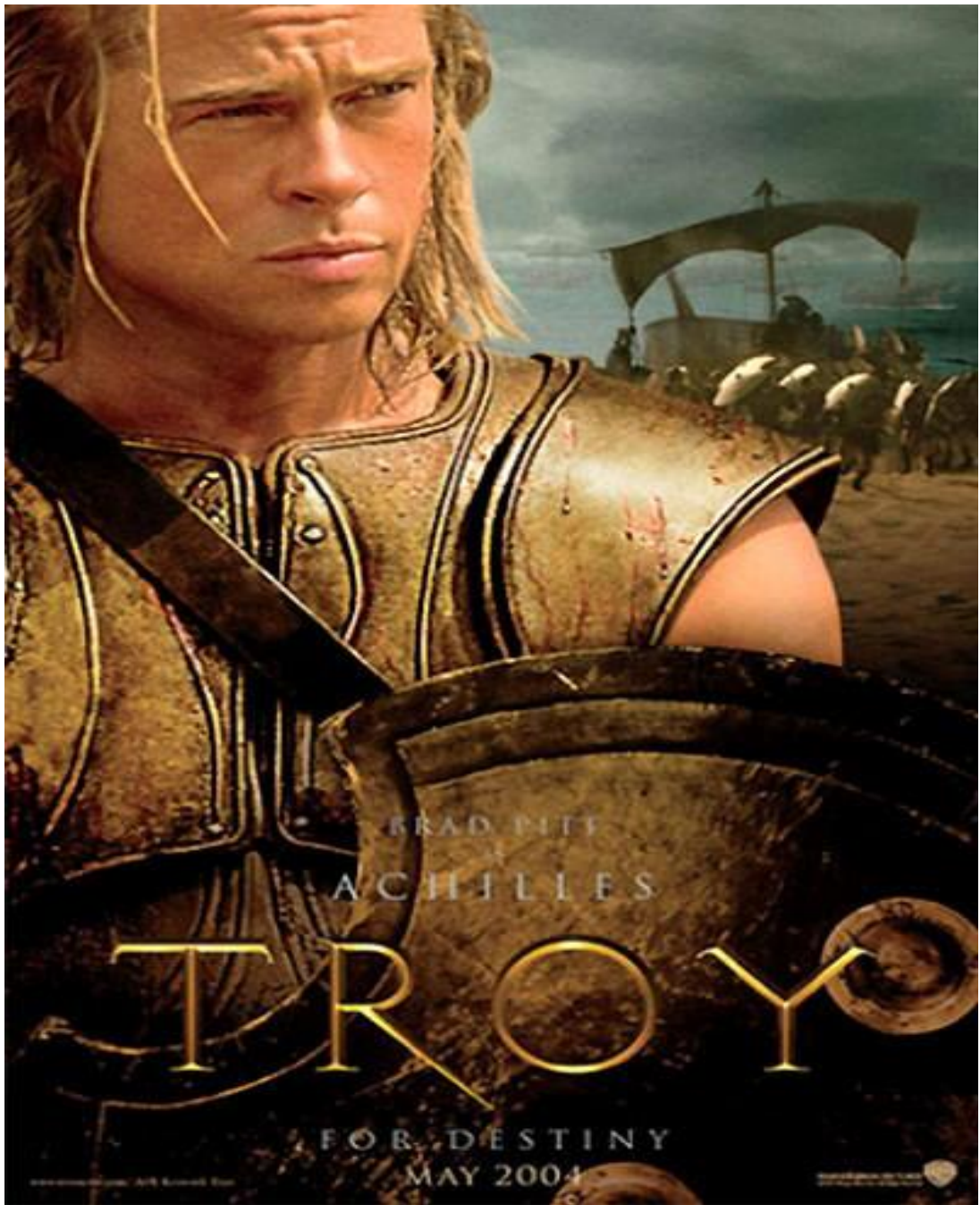


# Strategies to eliminate or minimize safety incidents and environmental impacts



Troy Govender, *Pr. Sci. Nat.*  
Manager, Environmental Management,  
**Eskom**



BRAD PITT  
ACHILLES

# TROY

FOR DESTINY  
MAY 2004

www.troy.com

WARNER BROS. PICTURES PRESENTS  
A WOLFGANG PETERSEN FILM  
BRAD PITT  
TROY  
COURTESY WARNER BROS. PICTURES

# CONCLUSION

- Safety and environmental management is not about the management of the environment
- Compelling reasons to respond
- The key business drivers for improved safety and environmental practices
- Four main challenges for safety and environmental management improvements
- $\text{Trust} + \text{Control} = k$
- $\text{Risk} = \text{Hazards} + \text{Outrage}$

\$100 for speeding and  
\$250 for misleading  
the public



# What does Safety and Environmental Management mean for Utilities?

Safety and environmental management is not about the **management of the work environment** by a safety specialist or an environmentalist, but rather about the organization **controlling its activities** that could

(a) lead to safety incidents/accidents

(b) have a negative impact on the environment.

*Can you see Friday yet.....?*



**Tuesday Blues**

# Why do all utilities have to respond to the safety and environment challenges

- The nature of activities at electricity utilities
- Great number of environmental problems or impacts on the planet
- Link between poverty and safety/environment
- Health and safety issues are related to and are influenced by the environment
- Moral or ethical reasons

# The business drivers for improved safety and environmental practices

- Public pressure (reputational risk)
- New standards and legislation
- New business opportunities
- Reduction of risk
- Ethical considerations





<http://loschistes.com>

# The Main Management Challenges for Utilities

- Make business more effective and its safety performance and environmental impact more acceptable
- Identify and realise potential areas for safety and environmental good practice
- Change (traditional) management practice
- High risk culture and low environmental ethic externally

# The Way Forward

- Trust + Control =  $k$
- Risk = Hazards + Outrage
- The Triple Bottom Line (Sustainable Development)
- Sense of community



# CONCLUSION

- Safety and environmental management is not about the management of the environment
- Compelling reasons to respond
- The key business drivers for improved safety and environmental practices
- Four main challenges for safety and environmental management improvements
- $\text{Trust} + \text{Control} = k$
- $\text{Risk} = \text{Hazards} + \text{Outrage}$

**“Can you see anything!!!”**



2013-10-14

13

**NGIYABONGA**

**TROY GOVENDER**

**Eskom, KZN OU**

**Troy.Govender@eskom.co.za**

**Tel. (031) 710-5111**